

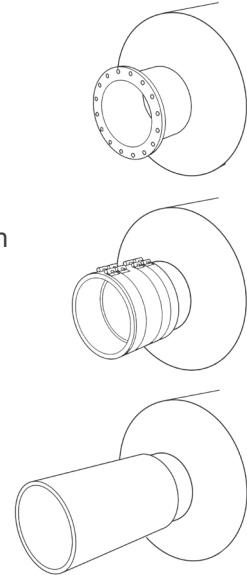
Pipe silencers

Pipe silencers can be used in cases where there are higher demands on low noise environment. They are suitable for use in low / medium pressure pipelines with air speeds up to 20 m/s. Pipe silencers manufactured by KUBÍČEK VHS are absorption construction.



CONNECTION VARIANT:

- by flange
- with rubber compensator with / without metal sheath
- by welding



Using the silencers can suppress annoying sound resonance, that is to change the frequency and level of noise emitted by pipeline to the area. Offered in two versions, as well as with enlargement element for absorbent material or as a simple insert that is installed directly into pipeline (suitable for large pipe diameters/depending on medium speed and pipeline pressure loss).

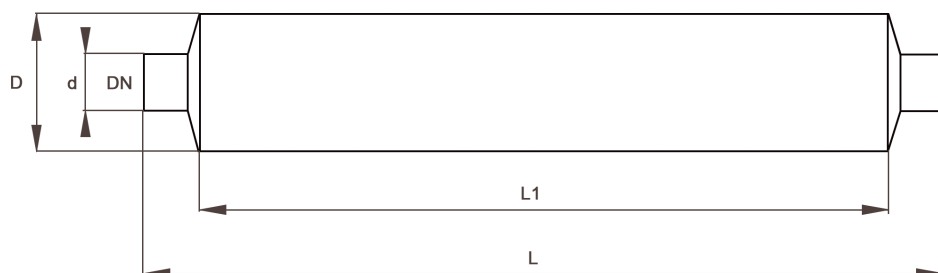
Pipe silencers are made of stainless steel. Way of connection to the pipeline can be selected according to local conditions and customer requirements.

APPLICATION:

- Noise reduction at blower unit discharge
- Changing the frequency and reduction of noise emitted by pipeline.

MAIN ADVANTAGES:

- Simple design
- Easy and fast installation
- For standard pipeline sizes **DN 50 - 500**
- The absorber material is not losing over time
- The length of silencer / insert can be adjusted according to the possibilities on site after consultation .
- Long service life



Dimensions pipe silencers

Dimensions pipe silencers [mm]				
DN connection size	d Ø connection size	D Ø tube sheet diameter	L total length	L1 length
50	54	154	1200	1000
50	60	154	1200	1000
50	63	154	1200	1000
65	76	204	1200	1000
80	84	204	1200	1000
80	89	204	1200	1000
100	104	219	1200	1000
100	114	219	1200	1000
125	129	254	1200	1000
125	133	254	1200	1000
150	154	254	2300	2000
150	156, 159	254	2300	2000
200	204, 206	324	2400	2000
200	219	324	2400	2000
250	254	506	2400	2000
250	256	506	2400	2000
250	273	506	2400	2000
300	306	506	2400	2000
300	324	506	2400	2000
350	356	610	4400	4000
400	406	610	4400	4000
500	508	800	4400	4000

Dimensions D and L can be adjusted on a different dimension than is shown in the table (with respect to existing pipelines or space for a silencer)

Pipe silencer is installed after blower aggregate using flexible compensators, flanges or welding. In case of using flexible compensators, additional supports of silencer must be used to prevent increased weight load of connection.

Silencers are supplied with connection material according to the customer.

Offer with informative character.